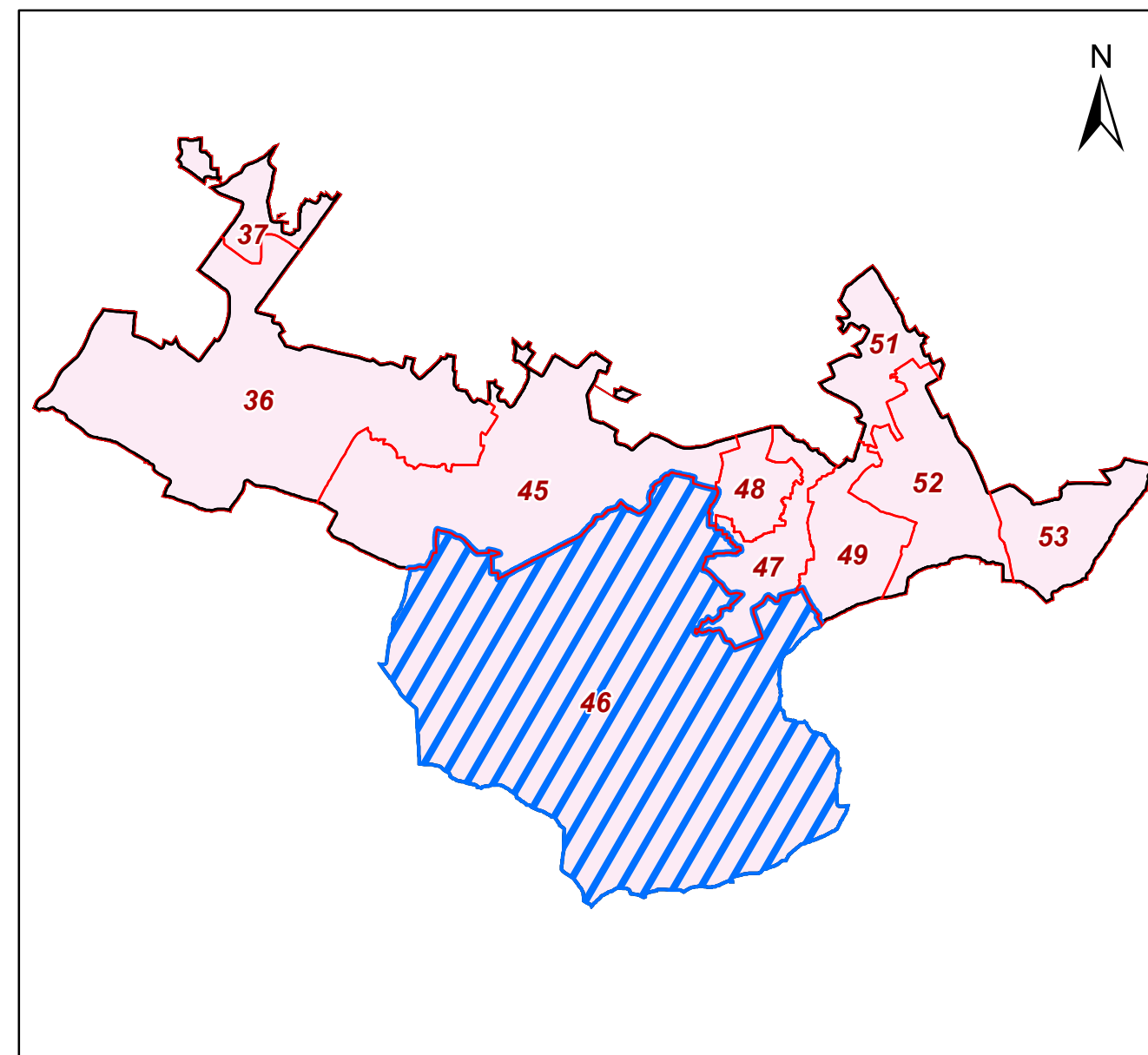


MAP OF AC-46 - CHHATARPUR, PC-SOUTH DELHI (7) - NCT OF DELHI


ifrcf/kr RESTRICTED
dpy folkkxh; Å; x grw FOR DEPARTMENTAL USE ONLY
fu; kx ds fy, ugha NOT FOR EXPORT

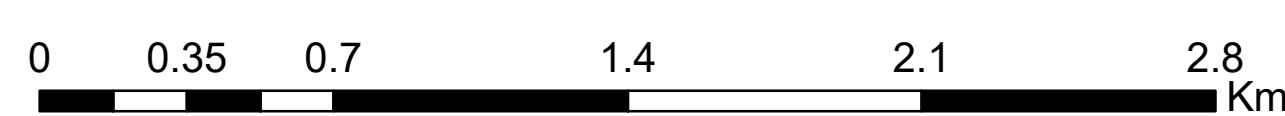


INDEX MAP



LEGEND

- | | | | |
|---|--------------------------|---|-------------------------|
|  | POLLING STATION LOCATION |  | MAJOR ROAD |
|  | VOTER CENTRE |  | MINOR ROAD |
|  | POLICE STATION |  | RAILWAY LINE |
|  | FIRE STATION |  | DRAIN |
|  | CATS AMBULANCE |  | METRO/RAIL LINE |
|  | MAJOR HOSPITAL |  | STADIUM |
|  | RAILWAY STATION |  | SPORTS COMPLEX |
|  | METRO STATION |  | GARDEN & PARKS |
|  | ACCIDENT TRAUMA CENTER |  | CREMATORIUM & GRAVEYARD |
|  | HEALTH FACILITY |  | JJ CLUSTER |
|  | ASHRAM |  | BUILDING |
|  | BUS TERMINAL |  | YAMUNA RIVER |
|  | BUS STOP | | |
|  | AUDITORIUM | | |
|  | BANK | | |
|  | CLUB | | |
|  | SCHOOL | | |
|  | COURT | | |
|  | CINEMA HALL | | |
|  | GOVERNMENT OFFICE | | |
|  | UNIVERSITY / COLLEGE | | |
|  | COMMUNITY CENTER | | |
|  | DARGAH | | |
|  | TEMPLE | | |
|  | TOMB | | |
|  | MOSQUE | | |
|  | GURUDWARA | | |
|  | IDGAH | | |
|  | CHURCH | | |
|  | MUSEUM | | |
|  | POLICE CHOWKI | | |
|  | POST OFFICE | | |
|  | STADIUM BUILDING | | |
|  | FILLING STATION | | |
|  | IGL STATION | | |
|  | MILK BOOTH | | |



1:18,000

Geospatial Delhi Limited

For further details about this map; please contact

(A Government of NCT of Delhi Company)

3rd Level, C- Wing, Vikas Bhawan-I
Civil Lines, New Delhi-110054

Website : www.gsdil.org.in

Website : www.gsdl.org.in

*Disclaimer: Reproduction in whole or part by any means is prohibited without written permission of Geospatial Delhi Limited
Data used in this map yet to be validated by concern Department.*

© GOVERNMENT OF DELHI COPYRIGHT, 2013.

Prepared by : Miss Kumari Harsha

Checked by: Miss. Pallavi Tomar

SN	PSBUILD_NA
1	NIGAM PRATIBHA VIDYALAYA-SAIDULAJAB
2	O/O EX ENG CIVIL DIVISION V DEPTT OF IRRIGATION & FLOOD CONTROL, PARYAVARAN COMPLEX(NEAR VIDYASAGAR HOSPITAL)SAIDULAJAB
3	GOVT CO-ED SEC SCHOOL-NEB SARAI
4	NIGAM PRATIBHA VIDYALAYA-NEB SARAI
5	IGNOU COMPLEX, -MAIDAN GARHI
6	SDMC CO-ED PRIMARY SCHOOL-MAIDAN GARHI
7	MC PRIMARY CO-ED SCHOOL-RAJPUR KHURD
8	COMMUNITY CENTER, NEAR SHIV GORAKH MANDIR, RAJPUR KHURD
9	GOVT GIRLS SR.SEC. SCHOOL-CHHATARPUR
10	NIGAM PRATIBHA VIDYALAYA-CHHATARPUR MANDIR
11	ACHARYA TULSI SARVODYA VIDYALAYA CHHATARPUR
12	SDMC PRIMARY GIRLS SCHOOL-CHHATARPUR MANDIR
13	MC PRIMARY SCHOOL NEW MANGLA PURI
14	CSKM PUBLIC SCHOOL SATBARI
15	MC PRIMARY CO-ED SCHOOL-SATBARI
16	SDMC PRIMARY CO-ED SCHOOL CHANDAN HULLA
17	MCD PRIMARY SCHOOL (GIRLS) FATEHPUR BERI - FATEHPUR BERI
18	SDMC PRATIBHA (BOYS) SCHOOL FATEHPUR BERI
19	GOVT SARVODAYA BAL VIDYALAYA FATEHPUR BERI
20	MC PRIMARY SCHOOL JONAPUR
21	SDMC PRIMARY CO-ED SCHOOL GADAIPUR
22	MC PRIMARY ADARSH VIDYALAYA-SULTANPUR
23	SARVODYA KANYA VIDYALAYA GHITORNI
24	MC PRIMARY BOYS SCHOOL-GHITORNI
25	SARVODYA KANYA VIDYALAYA AYA NAGAR
26	GOVT BOYS SR. SEC SCHOOL, AYA NAGAR
27	SDMC PRATIBHA CO-ED VIDYALAYA-AYA NAGAR
28	ST. PAUL'S PUBLIC SCHOOL-H BLOCK PHASE-VI,AYA NAGAR COLONY
29	SARVODAYA KANYA VIDYALAYA MANDI VILLAGE
30	GOVT BOYS SR.SEC. SCHOOL-MANDI
31	SDMC PRIMARY CO-ED ADARSH VIDYALAYA-DERA VILLAGE
32	SDMC PRIMARY CO-ED SCHOOL-BHATTI VILLAGE
33	GOVT CO-ED SR.SEC SCHOOL-SANJAY COLONY BHATTI MINES
34	MC PRIMARY SCHOOL RAJPUR KHURD
35	SAPTISHI PUBLIC SCHOOL RAJPUR KHURD

GSDL/CEO/01/04/2024/04