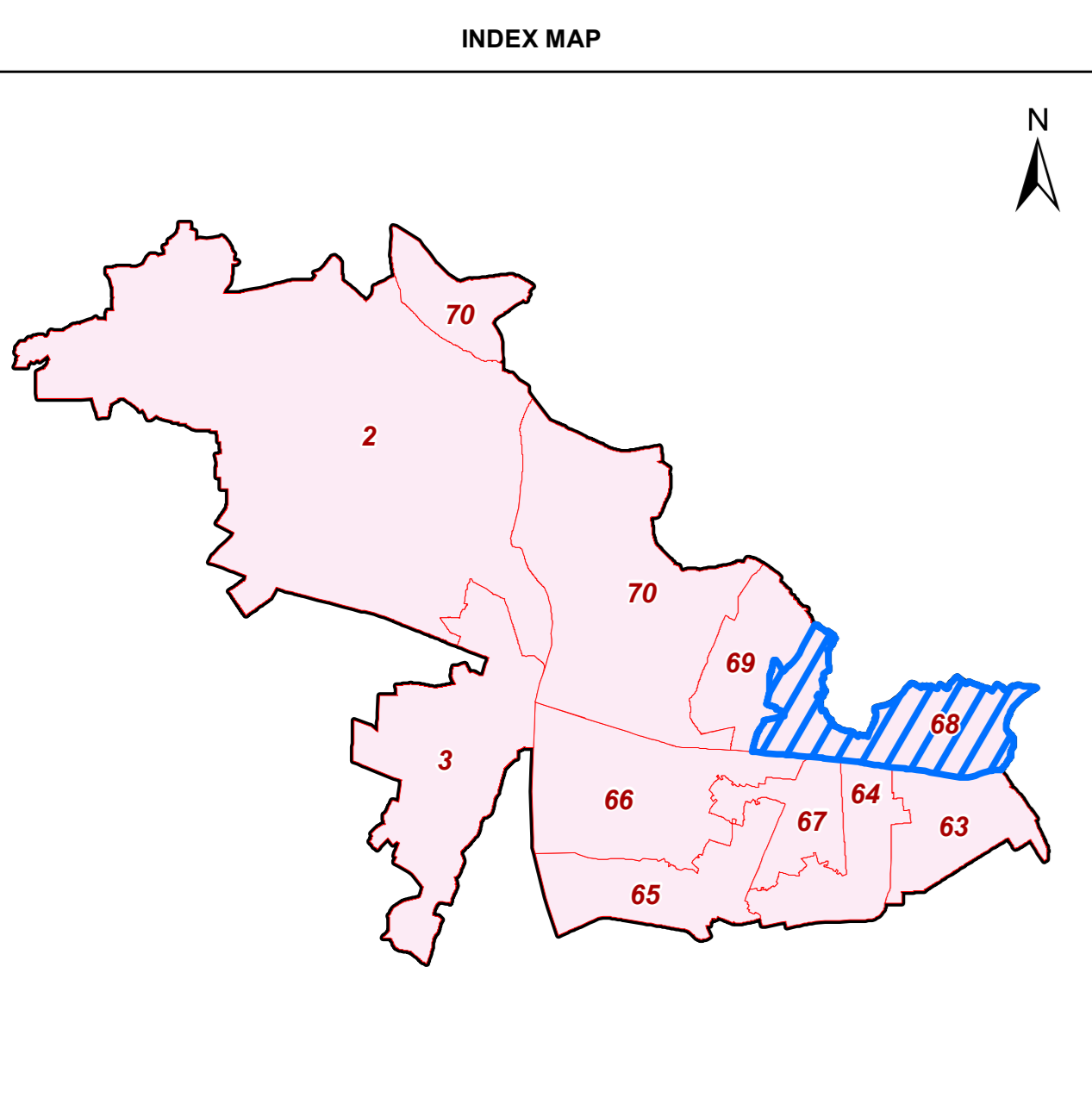


MAP OF AC-68-GOKALPUR, PC-NORTH EAST DELHI(2) - NCT OF DELHI

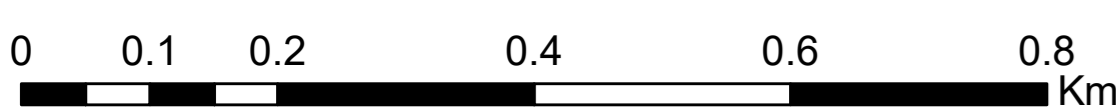
ifrc/ir RESTRICTED
 dcy folllxt; A; % grt FOR DEPARTMENTAL USE ONLY
 fu; lr ds fy, ught NOT FOR EXPORT



LEGEND

- | | |
|--------------------------|-------------------------|
| POLLING STATION LOCATION | MAJOR ROAD |
| VOTER CENTRE | MINOR ROAD |
| POLICE STATION | RAILWAY LINE |
| FIRE STATION | DRAIN |
| CATS AMBULANCE | METRO RAIL LINE |
| MAJOR HOSPITAL | STADIUM |
| RAILWAY STATION | SPORTS COMPLEX |
| METRO STATION | GARDEN & PARKS |
| ACCIDENT TRAUMA CENTER | CREMATORIUM & GRAVEYARD |
| HEALTH FACILITY | JJ CLUSTER |
| ASHRAM | BUILDING |
| BUS TERMINAL | YAMUNA RIVER |
| BUS STOP | |
| AUDITORIUM | |
| BANK | |
| CLUB | |
| SCHOOL | |
| COURT | |
| CINEMA HALL | |
| GOVERNMENT OFFICE | |
| UNIVERSITY / COLLEGE | |
| COMMUNITY CENTER | |
| DARGAH | |
| TEMPLE | |
| TOMB | |
| MOSQUE | |
| GURUDWARA | |
| IDGAH | |
| CHURCH | |
| MUSEUM | |
| POLICE CHOWKI | |
| POST OFFICE | |
| STADIUM BUILDING | |
| FILLING STATION | |
| IGL STATION | |
| MILK BOOTH | |

- ### AC NO. & NAME
- AC-2-BURARI
 - AC-3-TIMARPUR
 - AC-63-SEEMA PURI
 - AC-64-ROHTAS NAGAR
 - AC-65-SEELAMPUR
 - AC-66-GHONDA
 - AC-67-BABARPUR
 - AC-68-GOKALPUR
 - AC-69-MUSTAFABAD
 - AC-70-KARAWAL NAGAR



1:5,900

Geospatial Delhi Limited

For further details about this map, please contact

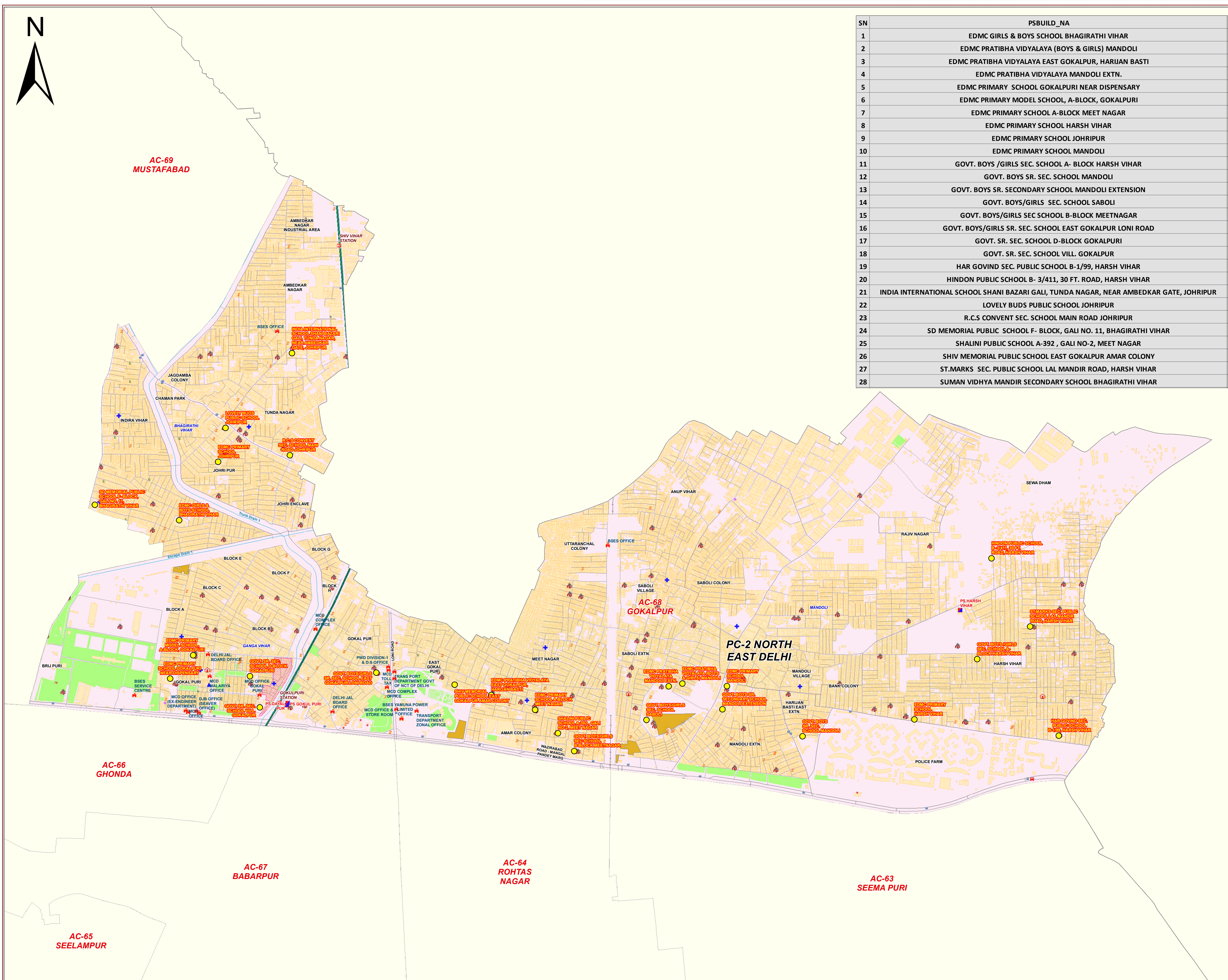
Geospatial Delhi Limited
 (A Government of NCT of Delhi Company)
 3rd Level, C- Wing, Vikas Bhawan-II,
 Civil Lines, New Delhi - 110054
 Website : www.gsdli.org.in

Disclaimer: Reproduction in whole or part by any means is prohibited without written permission of Geospatial Delhi Limited. Data used in this map yet to be validated by concern Department.

© GOVERNMENT OF DELHI COPYRIGHT, 2013.

Prepared by : Preeti Mishra

Checked by : Miss. Pallavi Tomar



SN	PSBUILD_NA
1	EDMC GIRLS & BOYS SCHOOL BHAGIRATHI VIHAR
2	EDMC PRATIBHA VIDYALAYA (BOYS & GIRLS) MANDOLI
3	EDMC PRATIBHA VIDYALAYA EAST GOKALPUR, HARJAN BASTI
4	EDMC PRATIBHA VIDYALAYA MANDOLI EXTN.
5	EDMC PRIMARY SCHOOL GOKALPURI NEAR DISPENSARY
6	EDMC PRIMARY MODEL SCHOOL, A-BLOCK, GOKALPURI
7	EDMC PRIMARY SCHOOL A-BLOCK MEET NAGAR
8	EDMC PRIMARY SCHOOL HARSH VIHAR
9	EDMC PRIMARY SCHOOL JOHRIPUR
10	EDMC PRIMARY SCHOOL MANDOLI
11	GOVT. BOYS /GIRLS SEC. SCHOOL A- BLOCK HARSH VIHAR
12	GOVT. BOYS SR. SEC. SCHOOL MANDOLI
13	GOVT. BOYS SR. SECONDARY SCHOOL MANDOLI EXTENSION
14	GOVT. BOYS/GIRLS SEC. SCHOOL SABOLI
15	GOVT. BOYS/GIRLS SEC SCHOOL B-BLOCK MEETNAGAR
16	GOVT. BOYS/GIRLS SR. SEC. SCHOOL EAST GOKALPUR LONI ROAD
17	GOVT. SR. SEC. SCHOOL D-BLOCK GOKALPURI
18	GOVT. SR. SEC. SCHOOL VILL. GOKALPUR
19	HAR GOVIND SEC. PUBLIC SCHOOL B-1/99, HARSH VIHAR
20	HINDON PUBLIC SCHOOL B- 3/411, 30 FT. ROAD, HARSH VIHAR
21	INDIA INTERNATIONAL SCHOOL SHANI BAZARI GALI, TUNDA NAGAR, NEAR AMBEDKAR GATE, JOHRIPUR
22	LOVELY BUDS PUBLIC SCHOOL JOHRIPUR
23	R.C.S CONVENT SEC. SCHOOL MAIN ROAD JOHRIPUR
24	SD MEMORIAL PUBLIC SCHOOL F- BLOCK, GALI NO. 11, BHAGIRATHI VIHAR
25	SHALINI PUBLIC SCHOOL A-392 , GALI NO-2, MEET NAGAR
26	SHIV MEMORIAL PUBLIC SCHOOL EAST GOKALPUR AMAR COLONY
27	ST.MARKS SEC. PUBLIC SCHOOL LAL MANDIR ROAD, HARSH VIHAR
28	SUMAN VIDHYA MANDIR SECONDARY SCHOOL BHAGIRATHI VIHAR